

Everyday life in old Sakai

Entering the Yamaguchi residence, you first step into a small earthen-floored hall that leads up to a larger hall with a kitchen stove. This is connected to a room with wooden flooring, where everyday life took place, and then flows through to some tatami mat rooms; each for a special function such as hosting guests and tea ceremony. Beyond this lie the West and North storehouses and the Garden. Here you can catch a glimpse of what life would be like in a "Machiya" (traditional town house) in Sakai. Documents and records from the Edo period (1603-1867) and early Showa period (1920's -1930's) help you to understand the life of "Machiya" residents in Sakai, including the Yamaguchi Family.

Garden (Niwa)



In autumn you can enjoy the beautiful red leaves of these sumac trees that are said to be almost 200 years old.

North storehouse (Kita dōzo)



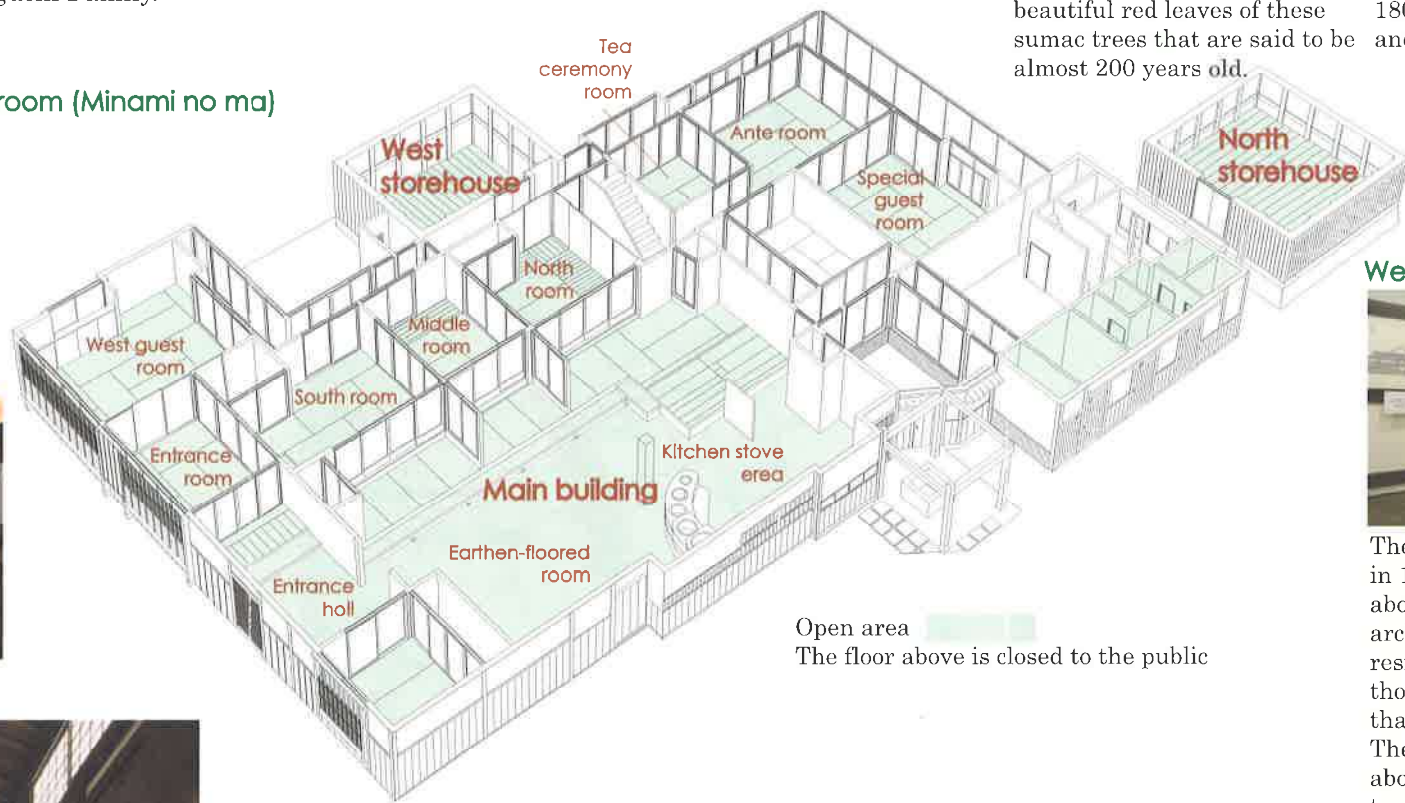
The North storehouse built in 1800, is now used as a gallery and a place to relax.



South room (Minami no ma)



Kitchen stove area



West storehouse (Nishi dōzo)



The West storehouse was built in 1775. Here you can learn about special features of the architecture of the Yamaguchi residence, what life was like in those days and about the moat that surrounded the town. There is also information about town planning, types of town houses and other interesting parts of Sakai's history.

Open area
The floor above is closed to the public

Earthen-floored room (Doma)



Special guest room (Oku-zashiki)



Tea ceremony room (Chashitsu)



In Sakai the tradition of the tea ceremony has a long history. In the Yamaguchi residence separate rooms were created for the different functions of the tea ceremony.

